



2015 INSTALLATION GUIDE
TREX® DECKING
AND RAILING

NEED HELP?

Trex provides a variety of valuable resources to answer your questions or concerns. For additional assistance, check out:

» **Trex.com**

Here you will find a wealth of useful information on Trex's extensive product portfolio, installation and care and cleaning instructions and videos, technical help, and FAQs. You'll also find inspiring photos of deck projects, steps to help you plan and start your project, and tips for selecting the right deck builder. At **trex.com**, you can request information, register your warranty, and reach out to customer service representatives who can answer even more questions.

» Call **1-800-BUY-TREX (1-800-289-8739)** and speak to a technical support representative who can answer your questions.

» Email your question or concern to **question@trex.com** and we'll get back to you quickly.

Refer to **www.trex.com** for up-to-date technical bulletins if information is not within this printed installation guide.

 This symbol indicates text continues to next page.

ON THE COVER

decking: Transcend in Tiki Torch and Vintage Lantern

railing: Trex posts in Classic White and Transcend in

Vintage Lantern with round aluminum balusters in Bronze

TREX® INSTALLATION GUIDE

CONTENTS

SECTION ONE: General Information

Safety	4
Tools	4
Care and Cleaning	5
Glossary of Terms	7

SECTION TWO: Planning Ahead

Trex® Decking	9
Railing (Including ADA Handrail)	9
Trex Lighting	9
Trex RainEscapes® Drainage System	9
Installing Hot Tubs, Planters, and Seating	9
Installing Fireplaces and/or Fire Pits	9
Installing a Pergola	10
Installing a Trex Spiral Staircase	10
Special Patterns	10

SECTION THREE: Lighting

How to Install Trex DeckLighting™

Parts List/Tools Needed	12
Lighting and Wiring Overview	12
General Information	13
Planning	13
Installing Wiring	13
Making Connections	13
Installing Post Cap Lights	14
Installing Deck Rail Lights	14
Installing Riser Lights	15
Installing Recessed Deck Lights	15

How to Install Trex LandscapeLighting™

Parts List/Tools Needed	16
How to Install Trex Well Light, Path Lights, and Wall Washlight	17
How to Install Trex Spotlight	18

SECTION FOUR: Decking

Decking and Fascia Recommended Fasteners	21
Trex Fascia Installation Recommendations	22
Framing and Fastening Tips	23
Dock Applications	23
Rooftop Decks and Sleeper Systems	24
Code Compliance	25
Gapping	26
Stairs	27

How to Install Decking

Tips for Installing a Trex Hideaway® Hidden Fastening System (Stainless Steel or Universal)	28
How to Install Trex Hideaway Universal Hidden Fasteners	29
How to Install Trex Escapes® Boards with Trex Hideaway Universal Fasteners	30
How to Replace Trex Boards Installed with Trex Hideaway Universal Fasteners	30
How to Install Stair Treads	31
How to Install Trex Transcend® Porch Floorboards	32
How to Install Porch Stair Treads	33
Location and Installation of Post Mounts	34

How to Install Post Mounts on Pressure-treated Wood Framing	34
Corner Post Installation	34
Line Post Installation	35
How to Install Guide Blocks	36
How to Install Railing System of Choice	36

SECTION FIVE: Railing

Trex Transcend® Railing

Parts List	38
Determining Balusters Needed	38
Trex Transcend Railing Styles	39
How to Install Standard Railing	40
How to Install Cocktail Railing	42
How to Install Traditional Railing	43
How to Install Round or Square Aluminum Balusters	44
How to Install Standard Glass Panel Railing	45
How to Install Cocktail Style Glass Panel Railing	46
How to Install Traditional Style Glass Panel Railing	48
How to Install On-An-Angle Railing	49
How to Install Crown and Universal Bird's Mouth Railing	50
How to Install Crown and Universal Stair Railing	51

Trex Reveal® Railing

Parts List	54
Determining Balusters Needed	54
Bracket Hardware - Horizontal Applications	55
Location and Installation of Posts	56
How to Install Horizontal Railing	58
How to Install Horizontal Swivel Brackets	64
How to Install Horizontal Swivel Railing	65
How to Install Foot Blocks - Horizontal Railing	67
Bracket Hardware - Stair Applications	68
How to Install Reveal Stair Posts and Stair Railing	70
Attaching Stair Brackets (Fixed Stair, Stair Swivel, and Compound Swivel) to Reveal Posts and Pressure-treated Posts and Post Sleeves	71
How to Install Aluminum Gate	79

Trex Select® Railing

Parts List	81
Determining Balusters Needed	81
How to Install Trex Select Railing	82
How to Install Trex 45° Adaptor	85
How to Install Trex Select Stair Railing	86

Trex ADA Railing

ADA Railing Requirements	89
Parts List	90
How to Install Trex ADA Railing	91

SECTION SIX: Warranties

Trex Transcend®, Enhance®, Select®, and Universal Fascia Limited Fade and Stain Warranty	94
Trex Limited Warranty	96
Trex Reveal® Warranty	97
Color Palette	Inside Back Cover

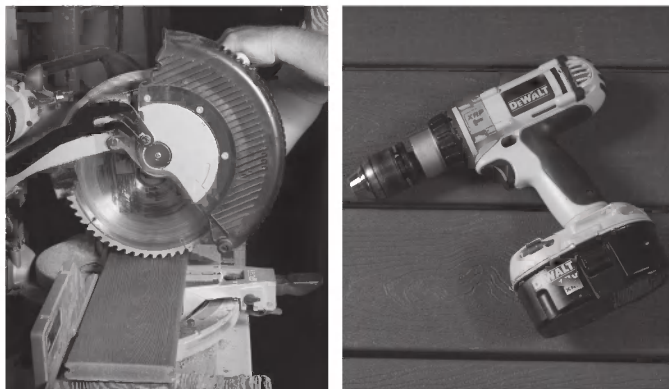
SAFETY

When working on any construction project, you should wear protective clothing and safety equipment. Wear safety glasses, gloves, a dust mask and long sleeves, particularly when cutting in confined spaces.

Trex decking and railing are heavier and more flexible than wood. **DO NOT** try to lift the same quantity of Trex boards as you would traditional lumber. Go to www.trex.com for Material Safety Data Sheets (MSDS).

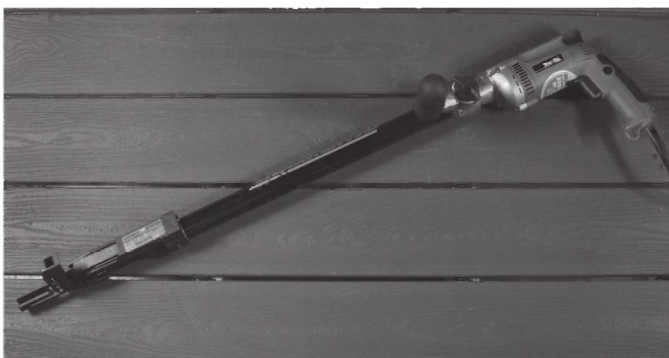
TOOLS

You can create intricate shapes, profiles, and patterns with Trex. Most installments require no special tools. For best results, use carbide-tipped blades and router bits.



When using a miter saw, we recommend using the Trex® Blade™. This comes in 3 different sizes and is ideal for cutting all our decking and railing products (these are not recommended for cutting Trex Elevations®). Refer to www.trex.com for more information.

Install Trex recommended fasteners with standard power drills.

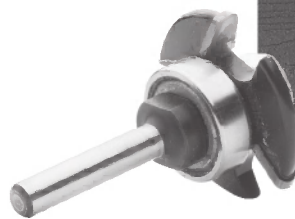
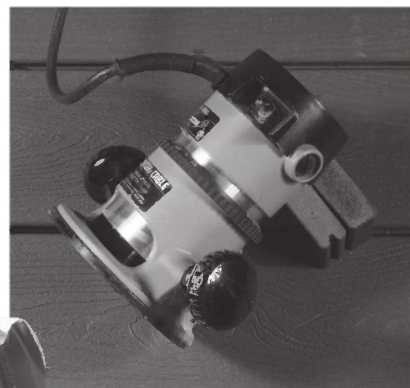


Screw guns provide a quick and easy way to fasten Trex.



The pneumatic gun by Tiger Claw®* is designed to dramatically decrease the time it takes to install a deck. Strong, lightweight, and durable, the gun uses Trex Hideaway® Hidden fasteners. Trex Gun Pail includes 900-count connector clips and TC-SG collated pneumatic screws.

Trex routs beautifully to give extremely crisp edges. The groove cutter/router bit is used with the Trex Hideaway fastening system.



⚠ CAUTION

DO NOT rout balusters. Routing will change the surface of Trex products.

*Tiger Claw® is a registered trademark of Tiger Claw, Inc.

TREX TRANSCEND® (DECKING AND RAILING)/TREX ENHANCE®/ TREX SELECT® (DECKING AND RAILING) CARE AND CLEANING GUIDE

All exterior building materials require cleaning. Generally, soap and water is all that is required to clean Transcend, Enhance, and Select products. *For additional information, see below.*

PROBLEM	SOLUTION
Dirt and Debris	The affected area should be sprayed off with a hose to remove surface debris. Use warm soapy water and a soft bristle brush to remove dirt and debris from the embossing pattern.
Chalk Lines	High permanence chalk lines may discolor the surface. Use only Irwin Strait-Line®* Dust-Off Marking Chalk (purple), available at <i>Irwin.com</i>
Tannins Due to Debris	Remove all debris from the deck using a hose or broom. Once the deck surface is dry, apply a “deck brightener”** to the deck as directed by the manufacturer. Deck brighteners contain oxalic acid, which will remove tannins.
Ice and Snow	A plastic shovel may be used to remove snow from the deck. Use calcium chloride or rock salt to melt the snow and ice from the deck surface.
Oil/Grease/Food	All food spills should be removed as soon as possible. The surface must be cleaned within seven days to maintain the stain warranty. To remove, spray off with a hose and use warm, soapy water and a soft bristle brush to remove spills from the embossing pattern.
Mold and Mildew	If debris such as pollen and dirt is allowed to remain on the deck surface, mold can feed on the biofilm. Using a hose and warm, soapy water with a soft bristle brush is recommended to remove the food source and mold.
Using a Pressure Washer (Concrete, Stucco, or Ground-in Construction Dirt)	A pressure washer with no greater than 3100 psi***** that has a fan attachment/adjustment and soap dispenser may be used to remove dirt, concrete dust, or other types of construction dirt. Spray deck with soap, and then follow by gently scrubbing each deck board with a soft bristle brush. Spray/rinse each individual deck board using fan tip no closer than 8” (203 mm) from the decking surface. RINSE THOROUGHLY. If dirty water from cleaning is left to dry, this will cause a film to remain on the decking surface.
Rust	Apply a “deck brightener”** to the deck as directed by the manufacturer. Deck brighteners contain oxalic acid, and will remove the rust stains.
Maintaining Transcend® or Select® railing	NEVER use acetone or other solvents on Trex Transcend or Select railing. For color transfer issues (from attachment of baluster spacer), use Mr. Clean®, Magic Eraser® Original*** or Magic Eraser® Extra Power to help remove this. For small surface scratches, marks, or scuffs, use Dupli-Color Scratch Seal® Clear Sealer Pen. ****

*Strait-Line® is a registered trademark of Irwin Industrial Tool Company.

**Use of products containing bleach or acid may lighten the underside or cut areas of the Trex Transcend/Enhance/Select decking.

*** Mr. Clean® and Magic Eraser® are registered trademarks of The Procter and Gamble Company.

****Scratch Seal® is a registered trademark of The Sherwin-Williams Company.

*****Use of a pressure washer greater than 3100 psi could damage the boards and void the warranty.

NOTES:

- » Refer to www.trex.com to view a general care and cleaning video for Transcend, Enhance, and Select decking.
- » Refer to www.trex.com for a care and cleaning guide for Trex Early Generation Composite and PVC Decking.

TREX REVEAL® RAILING CARE AND CLEANING GUIDE

Maintaining the appearance of your Trex Reveal railing is important. The occasional wash is recommended as over time your Reveal railing may show signs of weathering as a result of exposure to the elements. The frequency of cleaning will depend on the environment and exposure to various types of elements.

For installations where the atmosphere is influenced by bodies of salt water or other contaminant conditions, cleaning is required every 6 to 9 months. Failure to adhere to the required cleaning guidelines will void the Trex Limited Warranty with respect to any condition resulting from such failure. For purposes of any warranty claim, you should retain documentation of the cleaning date, cleaning method used, brand and amount of chemical used, and invoice from cleaning company (or a receipt for chemicals used).

Regular cleaning may minimize the effects of weathering and remove dirt, grime and other build-up. The best method of maintaining the appearance of your Reveal railing is to occasionally wash it using a solution of warm water and a non-abrasive, pH neutral detergent solution. The railing surface should be thoroughly rinsed after cleaning to remove all residues. Use a soft white cloth, sponge or a soft bristle brush.

DO NOT clean Trex Reveal railing with solvents such as thinners or solutions containing chlorinated hydrocarbons, esters or ketenes.

The following cleaners are recommended for cleaning Trex Reveal railing:

- » Formula 409® Cleaner Degreaser/Disinfectant*
- » Spray Nine® Cleaner/Disinfectant**
- » Simple Green® All Purpose Cleaner***
- » Fantastik® All Purpose Cleaner****
- » Windex® Cleaner*****

** Formula 409® Cleaner Degreaser/Disinfectant is a trademark of Clorox Company.*


*** Spray Nine® All Purpose Cleaner/Disinfectant is a trademark of Illinois Tool Works Inc.*

**** Simple Green® All Purpose Cleaner is a trademark of Sunshine Makers Inc.*

***** Fantastik® All Purpose Cleaner is a trademark of SC Johnson & Son Inc.*

****** Windex® is a trademark of SC Johnson & Son Inc.*

GLOSSARY OF TERMS

PVC	Trex Escapes®	
High Performance Composite	Trex Transcend®, Trex Enhance®, Trex Select®	
.....		
Baluster	One of a number of closely spaced supports for a railing.	
Baluster Spacer	A piece that snaps into top and bottom rail that gives precise spacing to the balusters.	
Bird's Mouth Gasket	A 45° corner cut gasket to be used when attaching railing to the corner of a 4x4 post sleeve.	
Bump Stop Tab	Part of the connector clip and allows for 1/4" (6 mm) spacing between decking boards.	
Carriage Bolt	A bolt with a rounded head and a square shoulder under the head to prevent turning during installation.	Bump Stop Tab
Connector Clip	Hidden fastener used between deck boards to secure positioning.	
Fascia	Horizontal trim board used to cover rim and end joists. May also be used for stair risers.	
Foot Block	Provides support for the bottom rail and gives a finished appearance.	
Joist	A horizontal structural pressure-treated board that runs from wall-to-wall, wall-to-beam, or beam-to-beam to support the deck floor and decking materials.	
Lag Bolt	A large metal fastener with a hex head and screw threads that drive it into the wood.	
Ledger Board	A beam supporting one end of the joists.	
Nosing	The rounded front edge of a stair tread.	
Pan-head Screw	Self-tapping screw with W-cut design and slightly rounded head.	
Pergola	A horizontal trellis or framework, supported on round or square posts, that can carry climbing plants and provides limited cover from sunshine. It may form a covered walk.	
Post Sleeve	Formed sleeve that fits over a standard pressure-treated 4x4 post.	
Post Sleeve Cap	Attractive flat or pyramid shaped cap to place on top of post sleeve.	
Post Sleeve Skirt	Decorative skirt that surrounds the bottom of the post and rests on surface of deck.	
Rail Gasket	A gasket used to fill the gap between the railing and post.	
Rail Light	Light that attaches to side of post sleeve.	
Rail Support Bracket (RSB)	Innovative bracket designed for horizontal, angled, and stair railing installations.	
Recessed Light	Light that is recessed so it sets flush with decking surface.	
Rim Joist	A joist on either side or the end of the deck. May have stairs attached and typically opposite of the ledger board.	
Riser	The vertical board nailed to a stringer.	
Riser Light	Light that attaches to stair riser.	
Scarf Cut	A joint used to join two pieces of decking end-to-end, usually cut at a 45° angle.	
Screw Plug	A small plug to cover a screw.	
Self-tapping Screw	A fastener that taps and drills its own hole and does not require a pre-drilled hole.	
Shim	A wedge that is placed between two surfaces to fill in the gap.	
Stair Tread	Steps or stairway boards that are the steps.	
Start Clip	Metal clips used at the end of decking boards to secure them in position.	
Stringer	The structural member in a stairway that supports the treads and risers.	
Tempered Glass	A safety glass that is four to five times stronger than standard glass made by a process of extreme heating and cooling.	
Universal Fastener	Plastic 1/4" (6 mm) self-gapping hidden fastener that has increased durability and allows for easier and faster installation than traditional fasteners.	
Weather Stripping	A self-adhesive strip applied to the glass panel option to create a tight fit with top and bottom rails.	